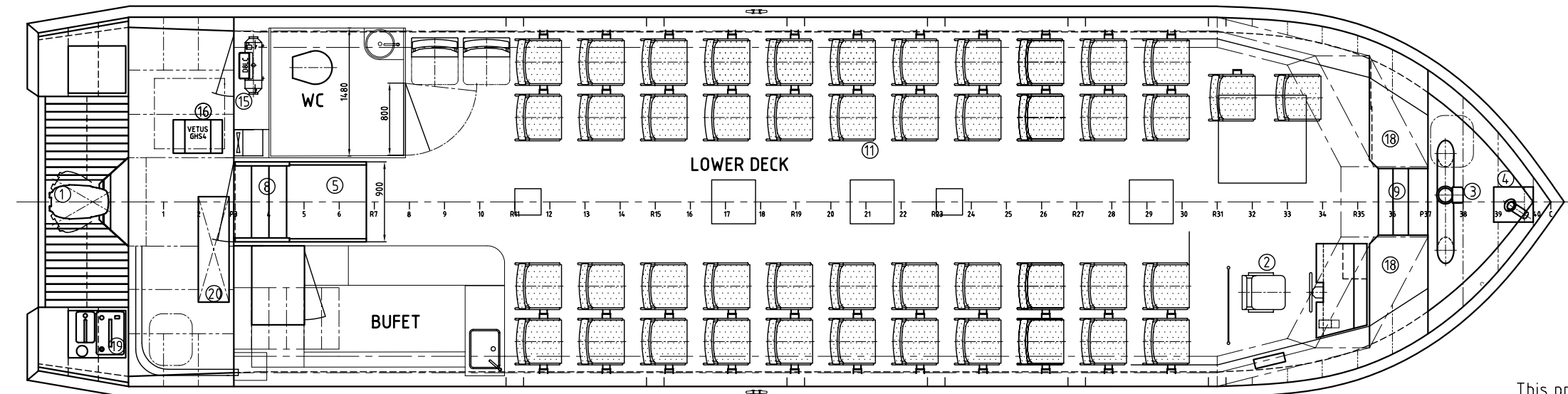
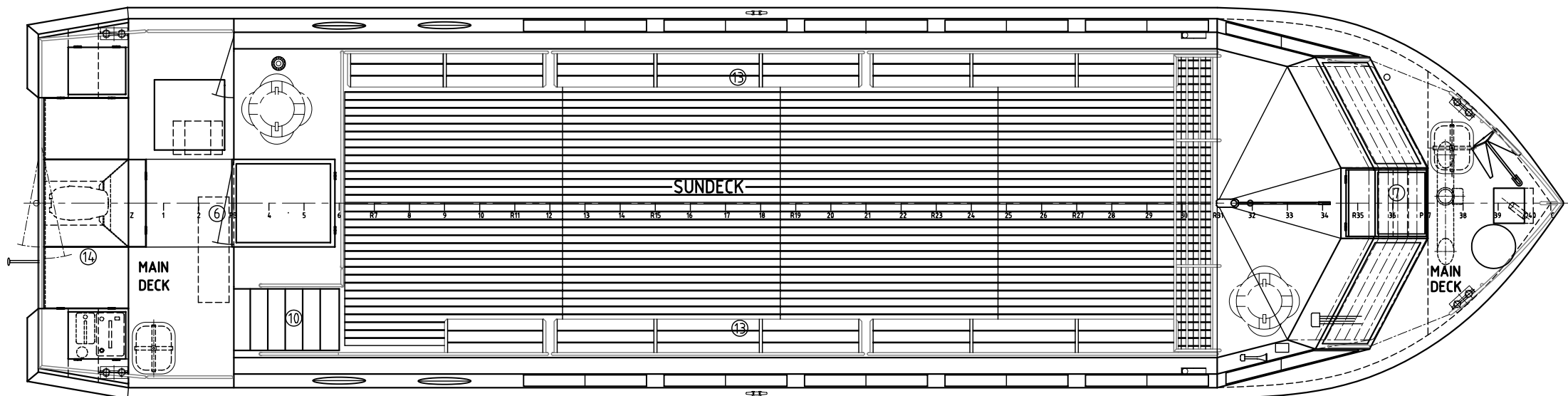
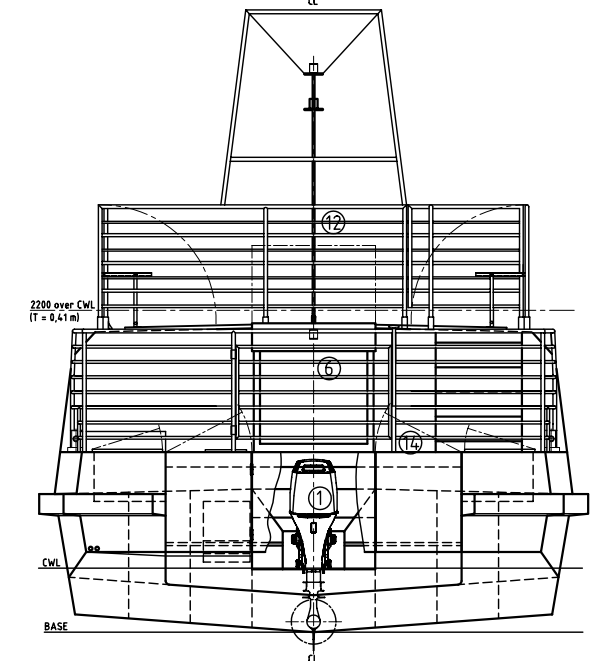
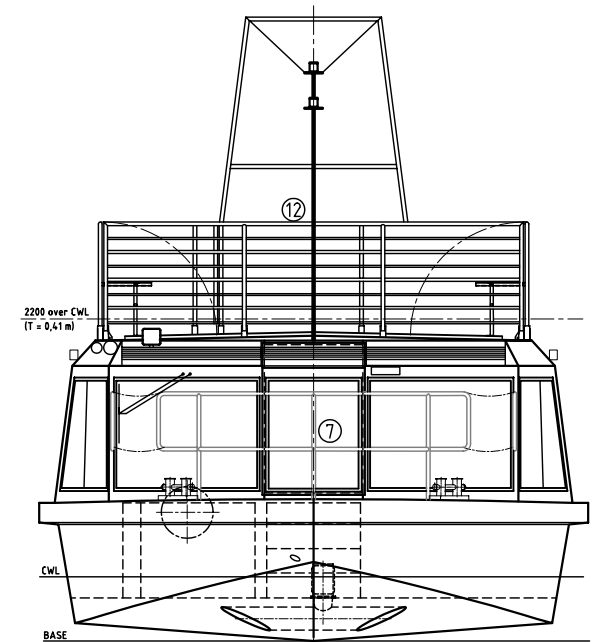
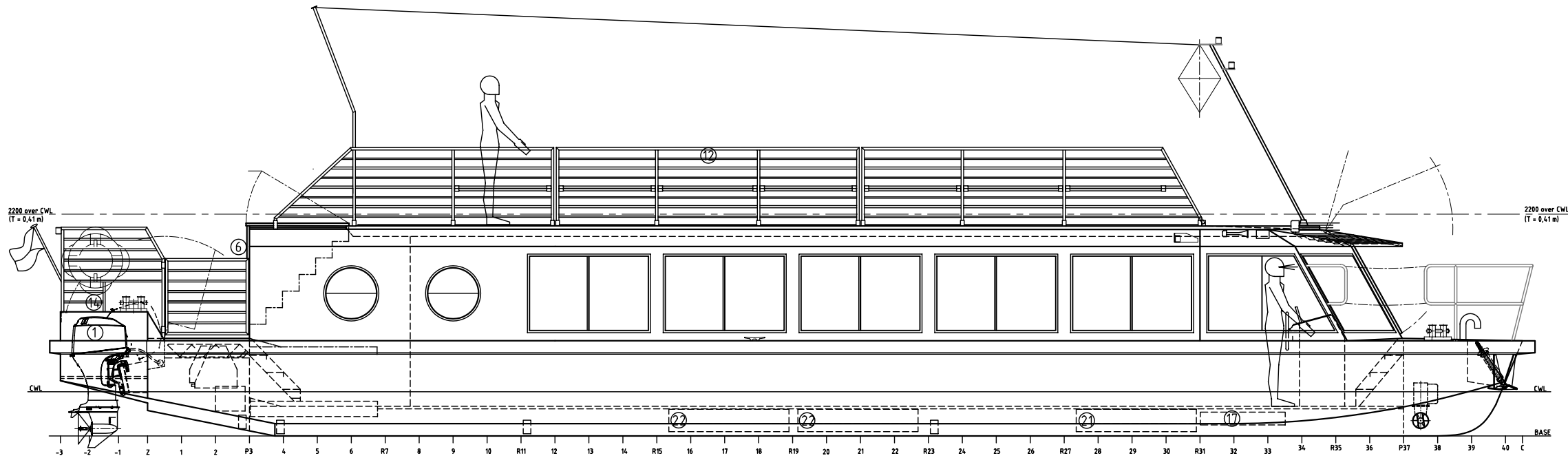


# Passenger vessel - OML60 - "Morava"



## LEGEND:

- 1) OUTBOARD ENGINE 44,1 kW (60 k)
- 2) HELMSMEN STAGE
- 3) BOW-THRUSTER (950 N)
- 4) CHAIN BOX
- 5) VERTICAL LIFTING PLATFORM ZP2, LIFTING CAPACITY 180 kg
- 6) MAIN ENTRANCE
- 7) EXIT TO MAIN DECK AT BOW
- 8) STAIRS TO LOWER DECK
- 9) STAIRS TO MAIN DECK AT BOW
- 10) STAIRS TO SUNDECK
- 11) SEATS (REMOVABLE)
- 12) RAILINGS ON SUNDECK (FOLDING)
- 13) BENCHES ON SUNDECK (FOLDING WITH RAILINGS)
- 14) OUTBOARD ENGINE COVER / SPACE FOR BICYCLES
- 15) AIR HEATING DEVICE
- 16) DIESEL-GENERATOR
- 17) BALAST
- 18) STORAGE

**L** = 16,20 m  
**L<sub>HVR</sub>** = 15,95 m  
**L<sub>max</sub>** = 17,50 m  
**B** = 4,20 m  
**B<sub>max</sub>** = 4,45 m  
**H** = 1,12 m  
**T<sub>tr</sub>** = 0,52 m  
**T<sub>max</sub>** = 0,66 m  
**G** = 24,70 t

TANK CAPACITY		SUPERSTRUCTURE PARAMETERS		CAPACITY		HULL CHARACTERISTICS	
19) GASOLINE	25 lit.	21) WATER	500 lit.	STANDING HEIGHT	2,0 m	PASSENGERS	60
20) DIESEL	110 lit.	22) SEWAGE	2 x 500 lit.	FLOOR AREA	3,55 x 13,60 m	CREW	2
							FRAME SPACING 400 mm

ALL RIGHTS OF THIS DESIGN AND DETAILS ARE RESERVED.  
 It is sent to you for personal use authorized in writing by our firm.  
 Copy or inspection by a third party or any work other than authorized is forbidden and will be considered an infringement of these rights.

This project is funded by Zlin county.

Change:	Notes:	Objekt:	Date:	Name:
Scale:	Signature:	OML60	06/07	J. Mandl
1:50	Ing. Jiří MANDL Shipdesign	Sdružení obcí pro rozvoj Bařova kanálu a vodní cesty na řece Moravě		
	Romanova 23 851 02 Bratislava Slovak Republic	Technol. group:		
	Tel. +421 2 287 27 641 Mobil +421 908 593 100 jiri.mandl@mandl-low.sk	Drawing name:	GENERAL ARRANGEMENT	
			02-01.03/07	
			No of sheets:	1
			Sheet:	1